

2" EQUILATERAL Δ

Doc's TURRET

DOWN

1" (3/4) thick

1/4" slot

#8 or #10 set screw

down cuts

SIDE RAKE xcept

SHOVEL NOSE has
only back RAKE

(7/16) 1/2"
CENTERED
HOLE

SHOULDER

BACK RAKE
(10°)

(FINISH
Set near flat)
.003 Doc.

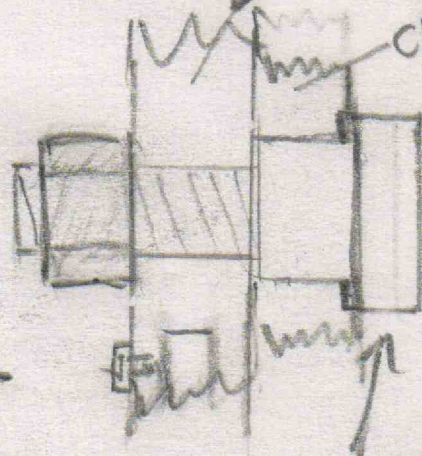
HORIZ.



down
Also cuts

TURRET

CLAPPER



VERY HANDY does much of
WHAT the "SPECIAL" shaper tool does

Avoids cranking table back for

NEXT cut USING MORE EFFICIENT SIDE
RAKE

A SIDE TURRET CARRIES a shear finish bit

but IS NOT AS handy. (CORNERS) xcept for
SURFACING

REPLACES the
Tool post

Doc Sack